

Rack, Cabinets & Accessories

Floor Cabinets

» **Relay Racks**

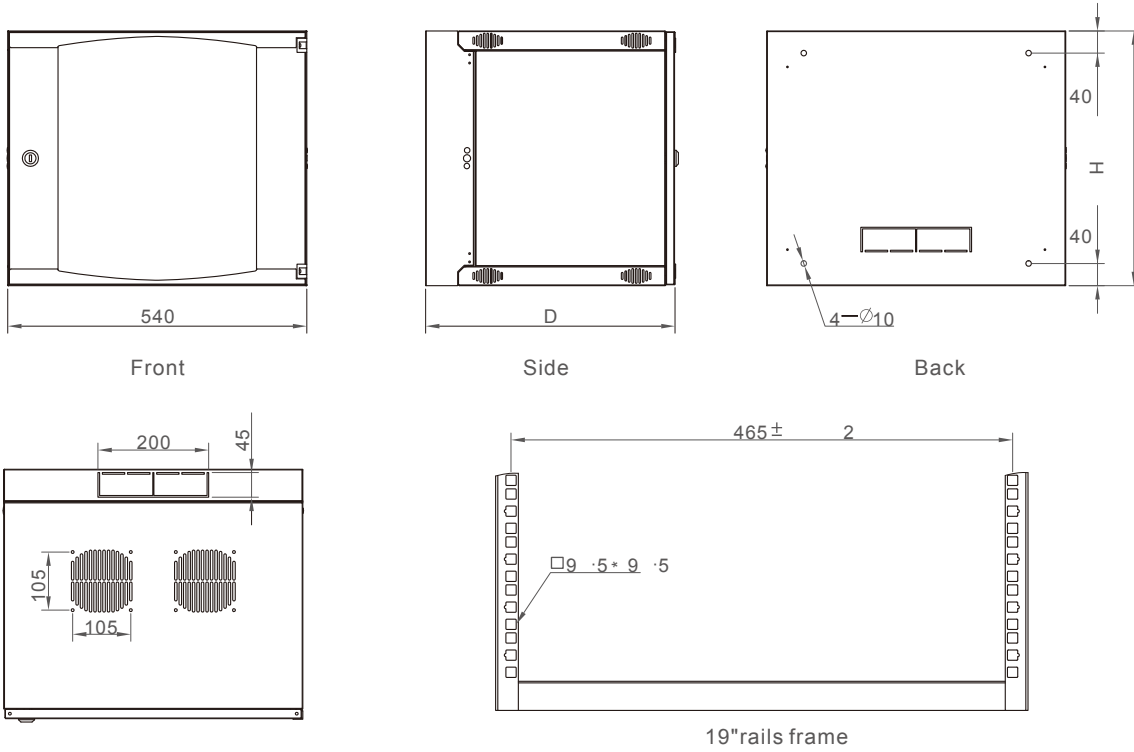
Wall Mount Cabinets

Cabinet & Rack Accessories

Aisle Containment

VA DOUBLE SECTION

Main Structure



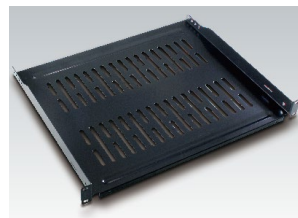
May Installs The Fitting



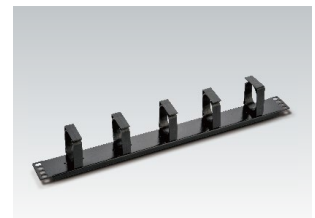
Cooling fan
See page 159



Blanking panel
See page 162



Cantilever shelf
See page 160



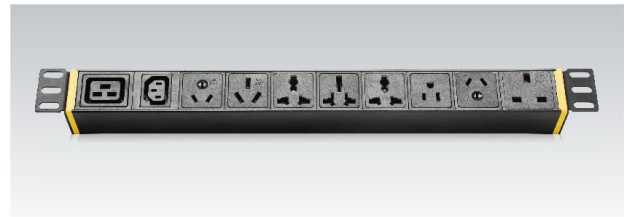
cable management
See page 163



M6 Screws & nets
See page 164



Earthing kit
See page 165



PDU
See page 153

605 Data Racks



Standard

- Comply with ANSI/EIA RS-310-D、IEC60297-2、DIN41494;PART1;DIN41494;PART7

Material

- SPCC Cold Rolled Steel ;
- Column : 1.5mm, others: 2.0mm

Colour

- 605 ■■■■■ 0■■:RAL7035
- 605 ■■■■■ 1■■:RAL9004

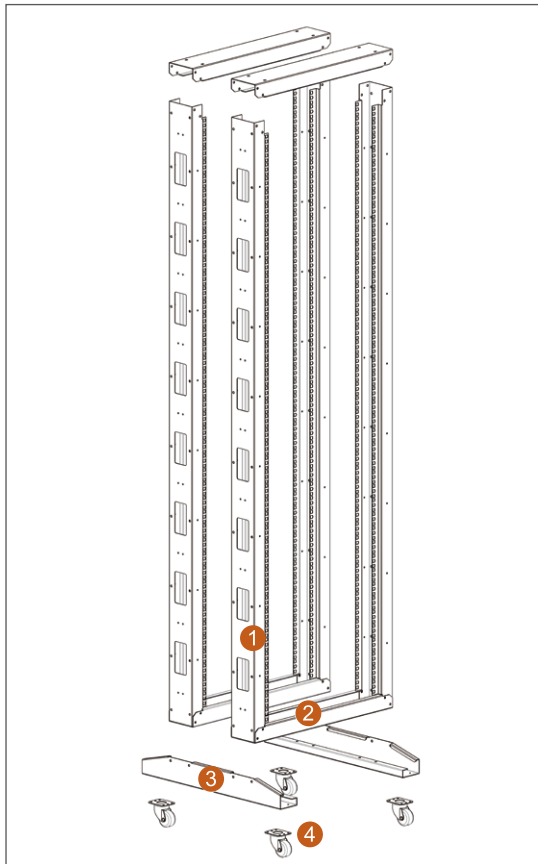
Loading Capacity

- Static loading: 250KG

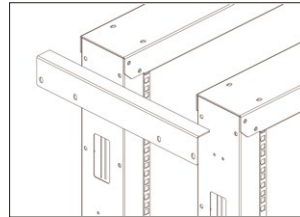
Feature

- Modular design, easily assemble and disassemble for delivery, low-cost.
- Various optional accessories according to requirements (cable management slot, removable working panel, etc.,)

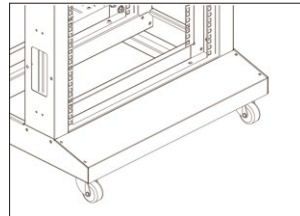
605 DATA RACKS



May Installs The Fitting



L bracket(customized)



Trim plate(customized)



Shelf
See page 160

Main Part

S/N	Specification	Qty	Material	Surface Finish	Remark
1	Column	4	SPCC t1.5	Powder coated	----
2	Plinth	4	SPCC t1.5	Powder coated	----
3	Support Crossbeam	2	SPCC t2.0	Powder coated	----
4	2" heavy duty castor	4			----
A	M6 screw& nuts	20	Steel	Color zinc	40pcs for over 33U
B	Trox tooling	1	Steel	Black	----

Specification

Model No.	RU	Width (mm)	Depth(D)(mm)	Height(H)(mm)	Volume (CBM)
605.6629.00. ■00	29	600	600	1422	1420*260*140
605.6633.00. ■00	33	600	600	1600	1600*260*140
605.6638.00. ■00	38	600	600	1822	1820*260*140
605.6642.00. ■00	42	600	600	2000	2000*260*140
605.6647.00. ■00	47	600	600	2222	2220*260*140

The packing information is for the flat pack and we suggest to use this flat pack to get significant cost saving.

606 Open Racks



Standard

- Comply with ANSI/EIA RS-310-D、IEC60297-2、DIN41494;PART1;DIN41494;PART7

Material

- SPCC Cold Rolled Steel ;
- Column : 1.5mm, others: 2.0mm

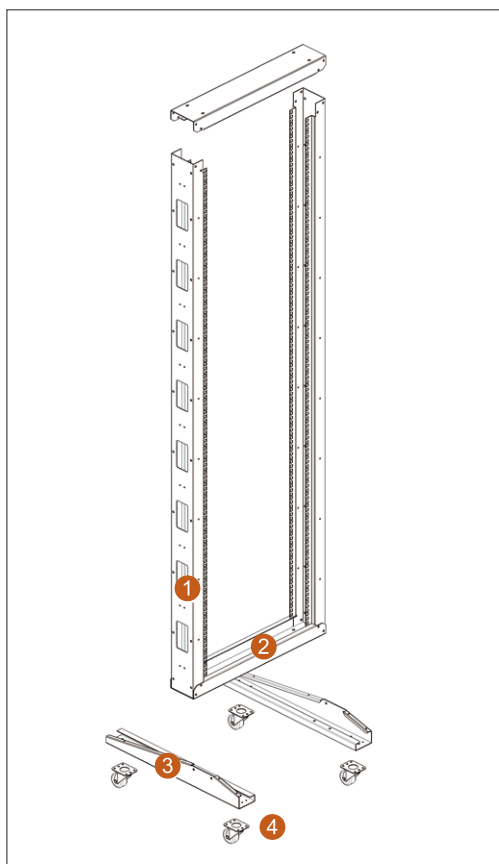
Colour

- 606 ■■■■■ 0■■:RAL7035
- 606 ■■■■■ 1■■:RAL9004

Loading Capacity

- Static loading: 150KG

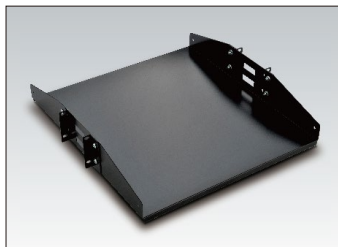
606 OPEN RACKS



Feature

- Modular design, easily assemble and disassemble for delivery, low-cost.
- Various optional accessories according to requirements(cable management slot, removable working panel, etc.).

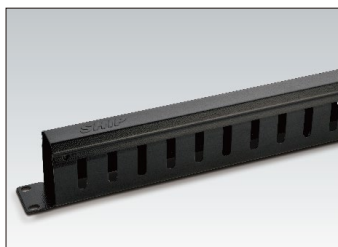
May Installs The Fitting



Double Sided Shelf
See page 159



Cantilever shelf
See page 159



cable management
See page 163

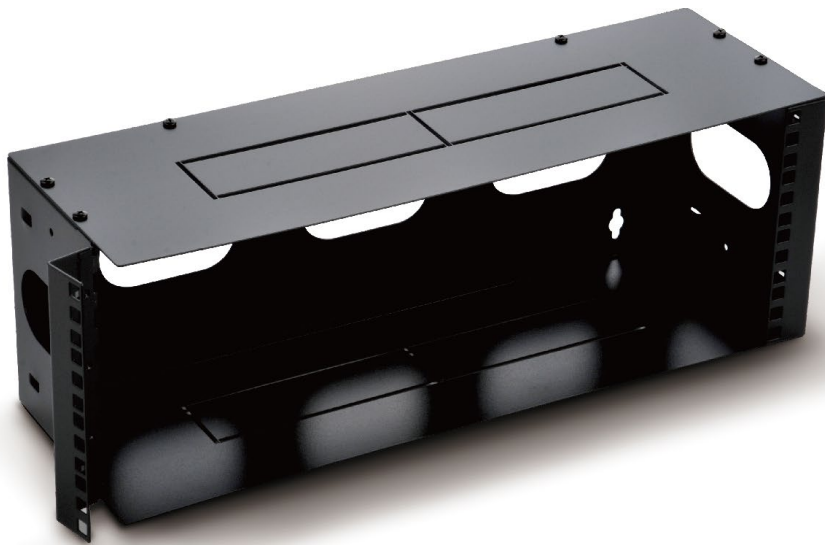
Main Part

S/N	Specification	Qty	Material	Surface Finish	Remark
1	Column	2	SPCC t1.5	Powder coated	----
2	Plinth	2	SPCC t2.0	Powder coated	----
3	Support Crossbeam	2	SPCC t2.0	Powder coated	----
4	2" heavy duty castor	4			----
A	M6 screw& nuts	20	Steel	Color zinc	40pcs for over 33U
B	Trox tooling	1	Steel	Black	----

Specification

Model No.	RU	Width (mm)	Depth(D)(mm)	Height(H)(mm)	Volume (CBM)
606.6629.00.■00	29	600	600	1422	1420*260*140
606.6633.00.■00	33	600	600	1600	1600*260*140
606.6638.00.■00	38	600	600	1822	1820*260*140
606.6642.00.■00	42	600	600	2000	2000*260*140
606.6647.00.■00	47	600	600	2222	2220*260*140

WALL MOUNT BRACKET



19" WALL MOUNT BRACKETS

- Black powder painted steel construction.
- Wall mount 19" bracket.
- Standard spacing and threading.
- Front dimensions by standard.
- EIA Soft cable protection grommets.
- Color: BLACK / GREY.



Main part:

Model No.	Description
702202100	2U-6" DP
702203100	3U-6" DP
702204100	4U-6" DP
702204101	4U-12" DP
702207100	7U-12" DP

WALL MOUNT BRACKETS COVER

- Used for wall mount bracket.
- material: SPCC cold rolled steel.
- Color: BLACK / GREY.

Main part:

Model No.	Description
702200100-A	6" DP
702200100-B	12" DP

