

Structure Cabling

Patch Cord

» **Patch Panel**

Jacks & Plugs

Keystone Faceplate & Surface Box

Optic Series

Patch Panels

P197A

Cat.6 patch panel.

Parameter

- Meet ISO/IEC 11801, TIA/EIA568C.
- Own patent products.
- every keystone could be disassembly alone
- (M255, CAT.6 keystone jack).
- Have connector & cable management, convenient for using High-quality guaranteed.
- Fit for wires AWG22-26.
- Plug omsertopm life 200 cycles.
- Plug insertion life 750 cycles Min.
- Dielectric strength: When applied AC 750V or DC 1000V 1 minute between adjacent terminal NO change.
- Material: Using PC/ABS for cover, PC for module, phosphor bronze for IDC wire post.
- 110 IDC.
- 19".lu, 24 ports.



Order Information:

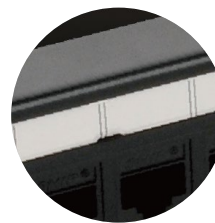
Item No.	Description
P197-24A	19".lu, 24ports
P197-48A	19".lu, 48ports



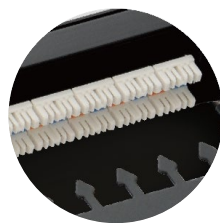
The structure of socket with patent improve the transmission performance significantly.



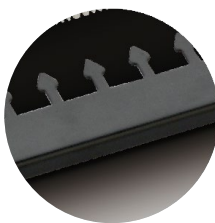
Clear and durable padding printing for port number.



Transparent plastic slip protect the port signal.



Single keystone could be removed or installed separately, Easy for facilitate maintenance work.



Rear cable management guarantee the stable transmission performance of CAT 6 system, and easy for management.

Patch Panels

P197U

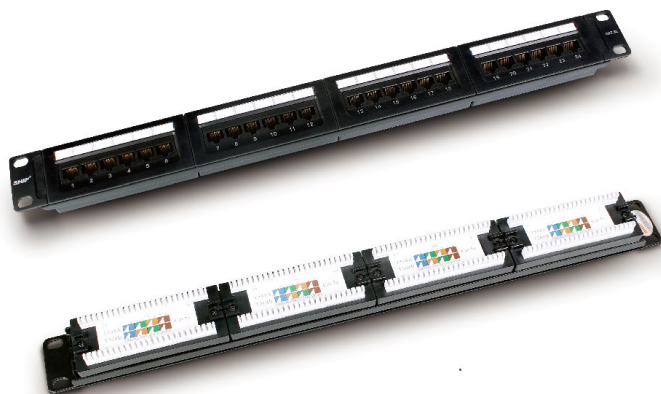
CAT 5E patch panel.

Parameter

- Parameter: professional industrial design, plastic cover with beautiful appearance.
- Port Numbers: color printing, firm and beautiful.
- Meet ISO/IEC 11801, TIA/EIA568C.
- Fit for wires AWG22-26.
- Plug omsertopm life 200 cycles.
- Plug insertion life 750 cycles Min.
- Dielectric strength:When applied AC 750V or DC 1000V 1 minute between adjacent terminal NO change
- Material:Using PC/ABS for cover,PC for module, phosphor bronze for IDC wire post.
- Dual IDC.

Order Information:

Item No.	Description
P197-24U	19".lu,24ports
P197-48U	19".lu,48ports



P197J

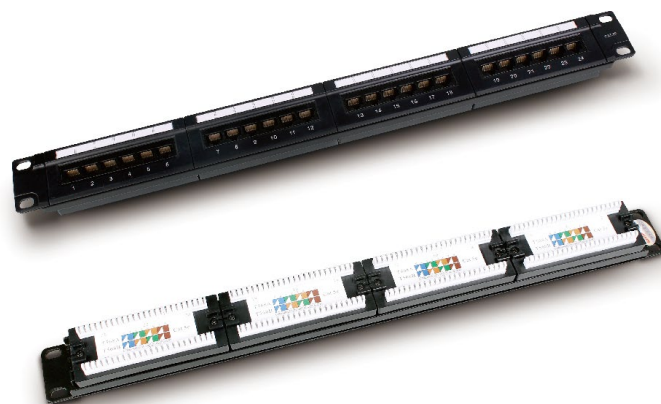
CAT 5E patch panel.

Parameter

- Parameter: professional industrial design, plastic cover with beautiful appearance.
- Port Numbers: color printing, firm and beautiful.
- Meet ISO/IEC 11801, TIA/EIA568C.
- Fit for wires AWG22-26.
- Plug omsertopm life 200 cycles.
- Plug insertion life 750 cycles Min.
- Dielectric strength:When applied AC 750V or DC 1000V 1 minute between adjacent terminal NO change.
- Material:Using PC/ABS for cover,PC for module, phosphor bronze for IDC wire post.
- Dual IDC.

Order Information:

Item No.	Description
P197-24J	19".lu,24ports
P197-48J	19".lu,48ports



Patch Panels

P197

Cat.5e patch panel.

Parameter

- Meet ISO/IEC 11801,TIA/EIA568C.
- Fit for wires AWG22-26.
- Plug omsertopm life 200 cycles.
- Plug insertion life 750 cycles Min.
- Dielectric strength:When applied AC 750V or DC 1000V 1 minute betweenadjacent terminal NO change.
- Material:Using PC/ABS for cover,PC for module, phosphor bronze for IDC wire post.
- Dual IDC.

Order Information:

Item No.	Description
P197-12	19".lu,12 ports
P197-24	19".lu,24 ports
P197-48	19".lu,48 ports



P197C

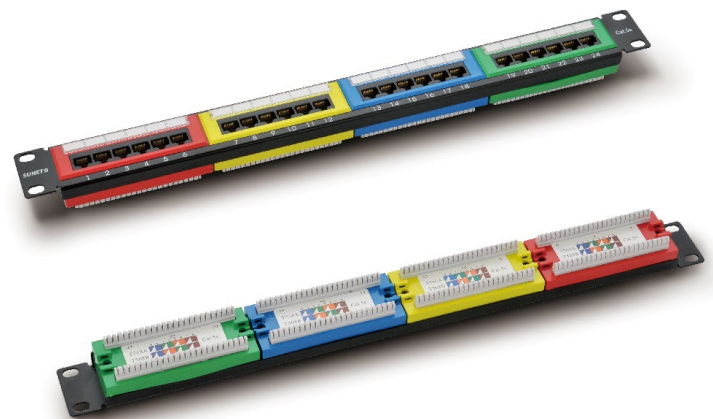
Cat.5e patch panel.

Parameter

- Multicolor.
- Meet ISO/IEC 11801,TIA/EIA568 C.
- Fit for wires AWG22-26.
- Plug omsertopm life 200 cycles.
- Plug insertion life 750 cycles Min.
- Dielectric strength:When applied AC 750V or DC 1000V 1 minute between adjacent terminal NO change.
- Material:Using PC/ABS for cover,PC for module, phosphor bronze for IDC wire post.
- Dual IDC.
- 19".lu,24 ports.

Order Information:

Item No.	Description
P197-24C	19".lu,24ports
P197-48C	19".lu,48 ports



Patch Panels

P197K

CAT 5E patch panel.

Parameter

- Meet ISO/IEC 11801, TIA/EIA568C.
- Fit for wires AWG22-26.
- Plug omsertopm life 200 cycles.
- Plug insertion life 750 cycles Min.
- Dielectric strength: When applied AC 750V or DC 1000V 1 minute between adjacent terminal NO change.
- Material: Using PC/ABS for cover, PC for module, phosphor bronze for IDC wire post
- 110 IDC.

Order Information:

Item No.	Description
P197-12K	19".lu, 12 ports
P197-24K	19".lu, 24 ports
P197-48K	19".lu, 48 ports



P197P

Cat.6 patch panel.

Parameter

- Meet ISO/IEC 11801, TIA/EIA568C.
- PCB unitary type.
- Have connector & cable management, convenient for using High-quality guaranteed.
- Fit for wires AWG22-26.
- Plug omsertopm life 200 cycles.
- Plug insertion life 750 cycles Min.
- Dielectric strength: When applied AC 750V or DC 1000V 1 minute between adjacent terminal NO change.
- Material: Using PC/ABS for cover, PC for module, phosphor bronze for IDC wire post.
- Dual IDC.

Order Information:

Item No.	Description
P197-24P	19".lu, 24 ports
P197-48P	19".lu, 48 ports



Patch Panels

P197F

Cat.5e patch panel.

Parameter

- Meet ISO/IEC 11801,TIA/EIA568C.
- British type.
- Fit for wires AWG22-26.
- Plug omsertopm life 200 cycles.
- Plug insertion life 750 cycles Min.
- Dielectric strength:When applied AC 750V or DC 1000V 1 minute between adjacent terminal NO change.
- Material:Using PC/ABS for cover,PC for module, phosphor bronze for IDC wire post.
- Krone IDC.

Order Information:

Item No.	Description
P197-16F	19".lu,16 ports
P197-24F	19".lu,24 ports
P197-48F	19".lu,48 ports



P197R

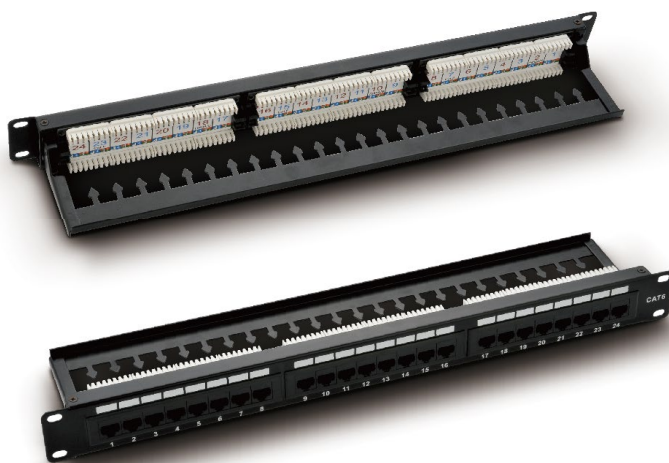
Cat.6 patch panel.

Parameter

- Meet ISO/IEC 11801,TIA/EIA568C.
- British type.
- Have connector & cable management,convenient for using High-quality guaranteed.
- Fit for wires AWG22-26.
- Plug omsertopm life 200 cycles.
- Plug insertion life 750 cycles Min.
- Dielectric strength:When applied AC 750V or DC 1000V 1 minute between adjacent terminal NO change.
- Material:Using PC/ABS for cover,PC for module, phosphor bronze for IDC wire post.
- Krone IDC.

Order Information:

Item No.	Description
P197-16R	19".lu,16 ports
P197-24R	19".lu,24 ports
P197-48R	19".lu,48 ports



Patch Panels

P197-1

CAT 5E patch panel.

Parameter

- Parameter: professional industrial design, plastic cover with beautiful appearance.
- Port Numbers: color printing, firm and beautiful
- Meet ISO/IEC 11801, TIA/EIA568C.
- Every keystone could be disassembly alone (M255A-1, CAT.5e keystone jack).
- Have connector & cable management, convenient for using High-quality guaranteed.
- Fit for wires AWG22-26.
- Plug omsertopm life 200 cycles.
- Plug insertion life 750 cycles Min.
- Dielectric strength: When applied AC 750V or DC 1000V 1 minute between adjacent terminal NO change.
- Material: Using PC/ABS for cover, PC for module, phosphor bronze for IDC wire post
- 110 IDC.
- 19".lu, 24 ports.



Order Information:

Item No.	Description
P197-24-1	19".lu, 24ports
P197-48-1	19".lu, 48 ports

P197-2

Cat.5e patch panel.

Parameter

- Parameter: professional industrial design, plastic cover with beautiful appearance.
- Port Numbers: color printing, firm and beautiful
- Meet ISO/IEC 11801, TIA/EIA568C.
- Every keystone could be disassembly alone (M255A-1, CAT.5e keystone jack).
- Have connector & cable management, convenient for using High-quality guaranteed.
- Fit for wires AWG22-26.
- Plug omsertopm life 200 cycles.
- Plug insertion life 750 cycles Min.
- Dielectric strength: When applied AC 750V or DC 1000V 1 minute between adjacent terminal NO change.
- Material: Using PC/ABS for cover, PC for module, phosphor bronze for IDC wire post.
- 110 IDC.
- 19".lu, 24 ports.



Order Information:

Item No.	Description
P197-24-2	19".lu, 24ports
P197-48-2	19".lu, 48 ports

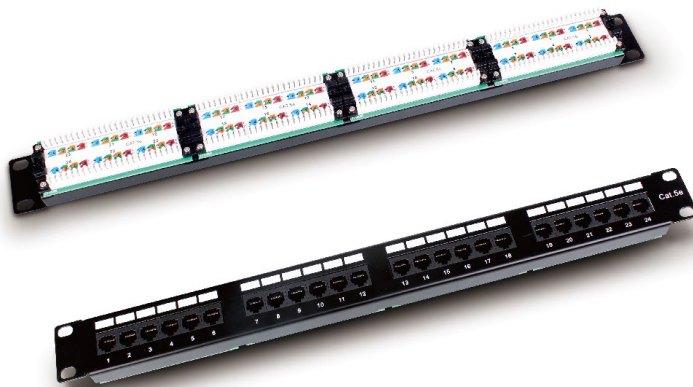
Patch Panels

P197N5

Cat.5e patch panel.

Parameter

- Meet ISO/IEC 11801,TIA/EIA568C.
- PCB unitary type.
- Fit for wires AWG22-26.
- Plug omsertopm life 200 cycles.
- Plug insertion life 750 cycles Min.
- Dielectric strength: When applied AC 750V or DC 1000V 1 minute between adjacent terminal NO change.
- Material:Using PC/ABS for cover,PC for module, phosphor bronze for IDC wire post.
- The internal PCB is directly screwed onto the iron panel. The whole product is strong and stable without any looseness.
- Dual IDC.



Order Information:

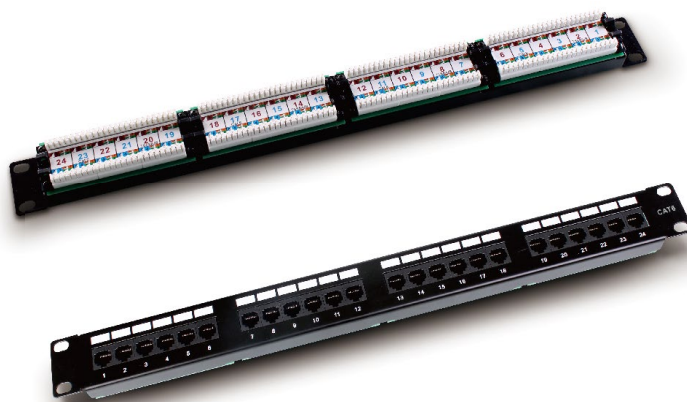
Item No.	Description
P197-24N5	19".lu,24ports
P197-48N5	19".lu,48 ports

P197N6

Cat.6 patch panel.

Parameter

- Meet ISO/IEC 11801,TIA/EIA568C.
- PCB unitary type.
- Have connector & cable management,convenient for usingHigh-quality guaranteed.
- Fit for wires AWG22-26.
- Plug omsertopm life 200 cycles.
- Plug insertion life 750 cycles Min.
- Dielectric strength: When applied AC 750V or DC 1000V 1 minute between adjacent terminal NO change.
- Material:Using PC/ABS for cover,PC for module, phosphor bronze for IDC wire post.
- The internal PCB is directly screwed onto the iron panel. The whole product is strong and stable without any looseness.
- Dual IDC.



Order Information:

Item No.	Description
P197-24N6	19".lu,24ports
P197-48N6	19".lu,48 ports

Patch Panels

P197V

Cat6 patch panel.

Parameter

- Parameter: professional industrial design, plastic cover with beautiful appearance.
- Port Numbers: color printing, firm and beautiful.
- Meet ISO/IEC 11801, TIA/EIA568C.
- Own patent products.
- Every keystone could be disassembly alone (M255, CAT.6 keystone jack).
- Have connector & cable management, convenient for using High-quality guaranteed.
- Fit for wires AWG22-26.
- Plug omsertopm life 200 cycles.
- Plug insertion life 750 cycles Min.
- Dielectric strength: When applied AC 750V or DC 1000V 1 minute between adjacent terminal NO change.
- Material: Using PC/ABS for cover, PC for module, phosphor bronze for IDC wire post.
- 110 IDC.
- 19".lu, 24 ports.



Order Information:

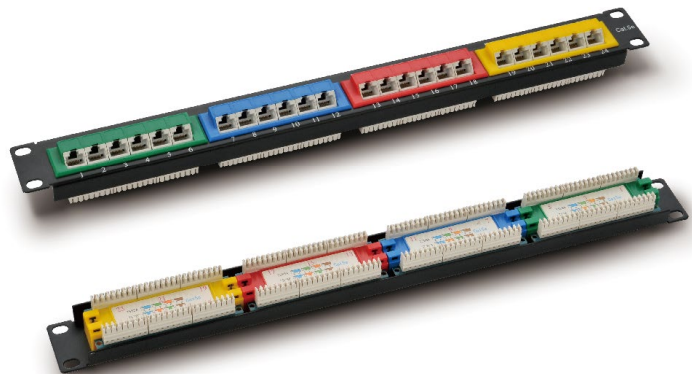
Item No.	Description
P197-24V	19".lu, 24 ports
P197-48V	19".lu, 48 ports

P197D

Cat.5e patch panel 45Degree.

Parameter

- Meet ISO/IEC 11801, TIA/EIA568C.
- Own patent products.
- Have connector & cable management, convenient for using High-quality guaranteed.
- Fit for wires AWG22-26.
- Plug omsertopm life 200 cycles.
- Plug insertion life 750 cycles Min.
- Dielectric strength: When applied AC 750V or DC 1000V 1 minute between adjacent terminal NO change.
- Material: Using PC/ABS for cover, PC for module, phosphor bronze for IDC wire post.
- Dual IDC.
- 19".lu, 24 ports.



Order Information:

Item No.	Description
P197-24D	19".lu, 24 ports
P197-48D	19".lu, 48 ports

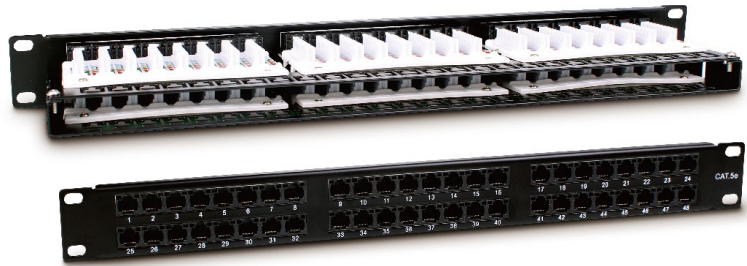
Patch Panels

P197-48C5-1U

Cat.5e patch panel.

Parameter

- Meet ISO/IEC 11801,TIA/EIA568B.
- 1U Space.
- Have connector & cable management, convenient for using High-quality guaranteed.

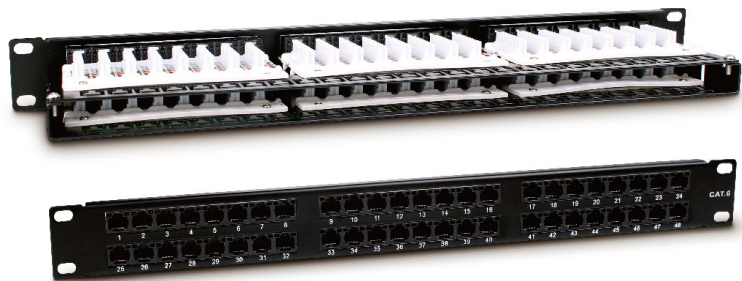


P197-48C6-1U

Cat.6 patch panel.

Parameter

- Meet ISO/IEC 11801,TIA/EIA568B.
- 1U Space.
- Have connector & cable management, convenient for using High-quality guaranteed.

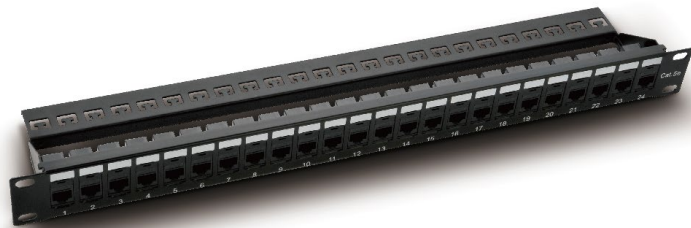


P197-24L5

Cat.5e patch panel.

Parameter

- Matching 19" cabinet/framework.
- Install 24PCS Cat5e coupler.



P197-24L6

Cat.6 patch panel.

Parameter

- Matching 19" cabinet/framework.
- Install 24PCS Cat6 coupler.



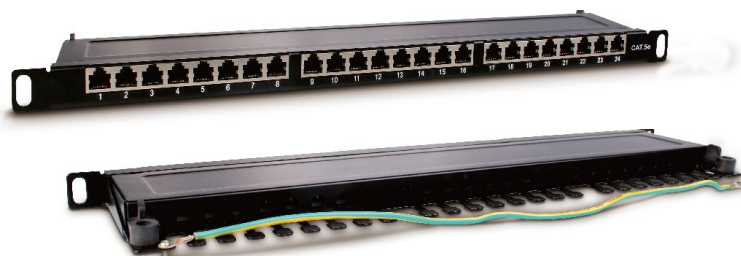
Patch Panels

P197-24C5-0.5U

Cat.5e patch panel.

Parameter

- Meet ISO/IEC 11801,TIA/EIA568B.
- 0.5U Space.
- Have connector & cable management, convenient for using High-quality guaranteed.

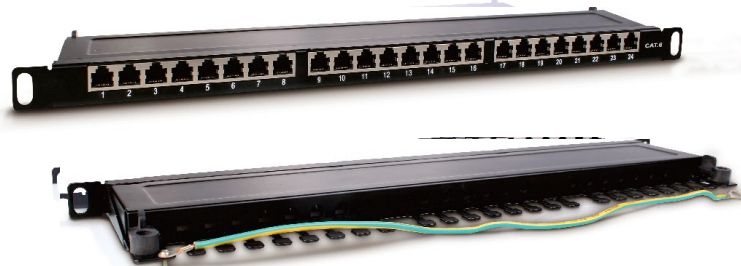


P197-24C6-0.5U

Cat.6 patch panel.

Parameter

- Meet ISO/IEC 11801,TIA/EIA568B.
- 0.5U Space.
- Have connector & cable management, convenient for using High-quality guaranteed.

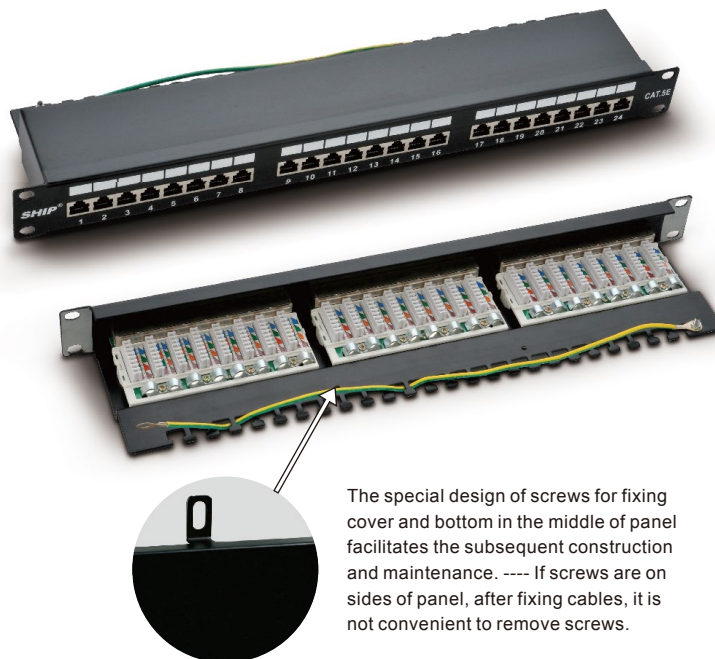


P197-24M

Cat.5e patch panel.

Parameter

- 24 Ports CAT5E Full Shielded Type Patch Panel (FTP).
- Own patent products.
- Have connector & cable management, convenient for using High-quality guaranteed.
- Fit for wires AWG22-26.
- Plug omsertopm life 200 cycles.
- Plug insertion life 750 cycles Min.
- Dielectric strength:When applied AC 750V or DC 1000V 1 minute between adjacent terminal NO change.
- Material:Using PC/ABS for cover,PC for module, phosphor bronze for IDC wire post.



The special design of screws for fixing cover and bottom in the middle of panel facilitates the subsequent construction and maintenance. ---- If screws are on sides of panel, after fixing cables, it is not convenient to remove screws.

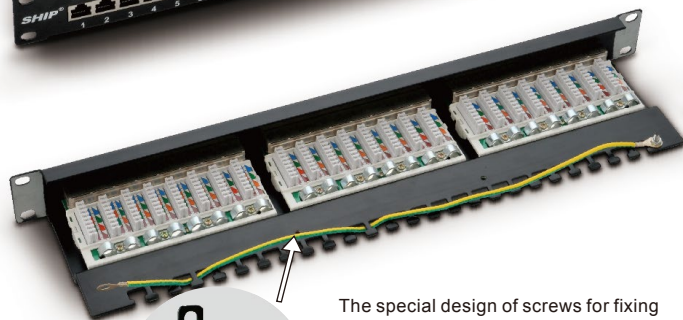
Patch Panels

P199-24M

Cat.5e patch panel.

Parameter

- 24 Ports CAT5E Full Shielded Type Patch Panel (FTP).
- Have connector & cable management, convenient for using High-quality guaranteed.
- Fit for wires AWG22-26.
- Plug omsertopm life 200 cycles.
- Plug insertion life 750 cycles Min.
- Dielectric strength: When applied AC 750V or DC 1000V 1 minute between adjacent terminal NO change.
- Material: Using PC/ABS for cover, PC for module, phosphor bronze for IDC wire post.



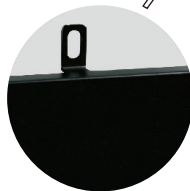
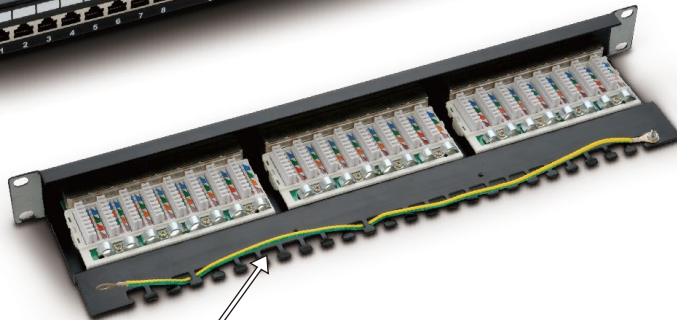
The special design of screws for fixing cover and bottom in the middle of panel facilitates the subsequent construction and maintenance. ---- If screws are on sides of panel, after fixing cables, it is not convenient to remove screws.

P200-24

CAT 6A shielded patch panel.

Parameter

- 24 Ports CAT6A Full Shielded Type Patch Panel(FTP)
- Own patent products.
- Have connector & cable management, convenient for using High-quality guaranteed.
- Fit for wires AWG22-26.
- Plug omsertopm life 200 cycles.
- Plug insertion life 750 cycles Min.
- Dielectric strength: When applied AC 750V or DC 1000V 1 minute between adjacent terminal NO change.
- Material: Using PC/ABS for cover, PC for module, phosphor bronze for IDC wire post.



The special design of screws for fixing cover and bottom in the middle of panel facilitates the subsequent construction and maintenance. ---- If screws are on sides of panel, after fixing cables, it is not convenient to remove screws.

Patch Panels

P199-24

CAT 6 shielded patch panel.

Parameter

- 24 Ports CAT6 Full Shielded Type Patch Panel(FTP)
- Have connector & cable management, convenient for using High-quality guaranteed.
- Fit for wires AWG22-26.
- Plug omsertopm life 200 cycles.
- Plug insertion life 750 cycles Min.
- Dielectric strength:When applied AC 750V or DC 1000V 1 minute between adjacent terminal NO change.
- Material:Using PC/ABS for cover,PC for module, phosphor bronze for IDC wire post.

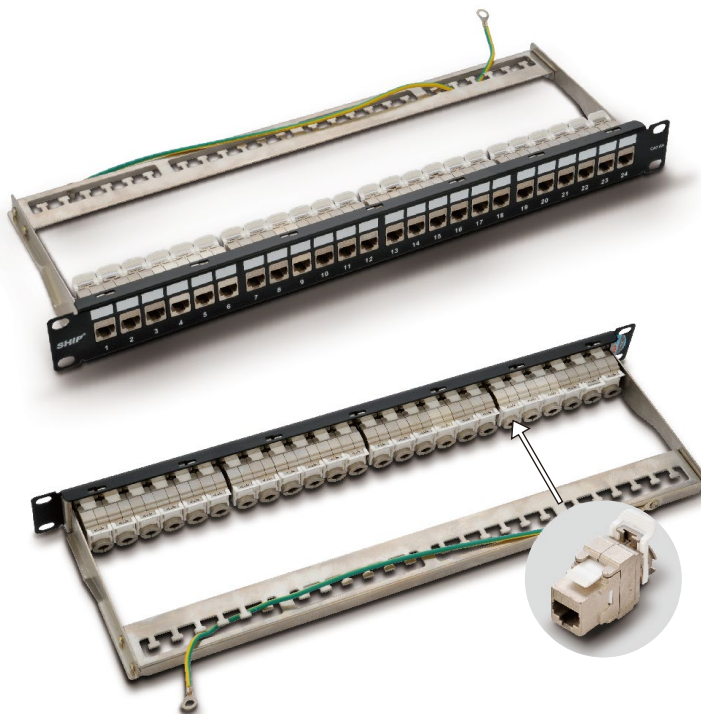


P199-24-1

CAT 6 shielded patch panel.

Parameter

- 24 ports cat6 full shielded type patch panel(FTP)
- Have connector & cable management, convenient for using High-quality guaranteed.
- Fit for wires AWG22-26.
- Plug omsertopm life 200 cycles.
- Plug insertion life 750 cycles Min.
- Dielectric strength:When applied AC 750V or DC 1000V 1 minute between adjacent terminal NO change.
- Material:Using PC/ABS for cover,PC for module, phosphor bronze for IDC wire post.



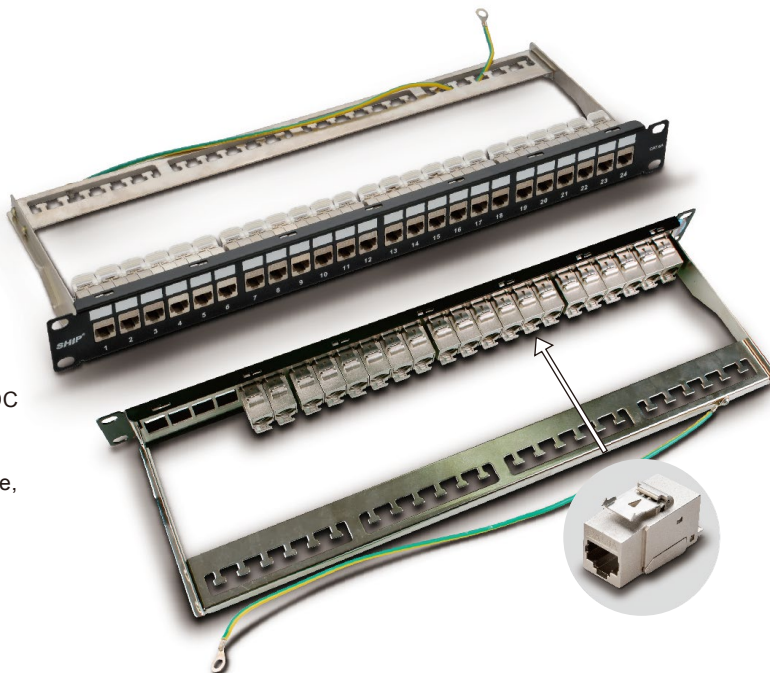
Patch Panels

P200-24-1

CAT 6A shielded patch panel.

Parameter

- 24 ports cat6a full shielded type patch panel(FTP)
- Have connector & cable management, convenient for using High-quality guaranteed.
- Fit for wires AWG22-26.
- Plug omsertopm life 200 cycles.
- Plug insertion life 750 cycles Min.
- Dielectric strength:When applied AC 750V or DC 1000V 1 minute between adjacent terminal NO change.
- Material:Using PC/ABS for cover,PC for module, phosphor bronze for IDC wire post.



P197-12B1

Cat.5e patch panel.



Parameter

- Meet ISO/IEC 11801, TIA/EIA568C.
- Fit for Installing at the narrow work area.
- Panel make of metal, others plastic.
- 110 IDC.
- 12 port patch panel.

P197-12B2

Cat.5e patch panel.

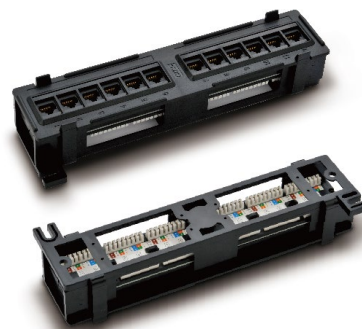


Parameter

- Meet ISO/IEC 11801, TIA/EIA568C.
- Fit for Installing at the narrow work area.
- Plastic face plate.
- DUAL IDC.
- 12 port patch panel.

P197-12B3

Cat.6 patch panel.



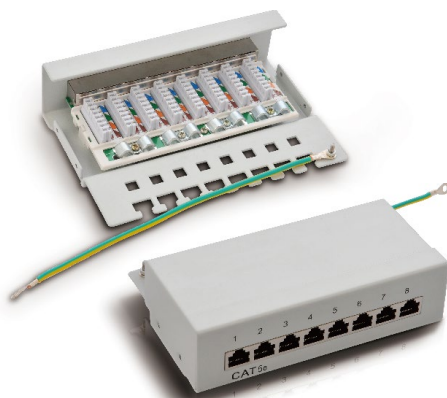
Parameter

- Meet ISO/IEC 11801, TIA/EIA568C.
- Fit for Installing at the narrow work area.
- Plastic face plate.
- DUAL IDC.
- 12 port patch panel.

Patch Panels

P198-8-C5

Cat5e shielded 8 ports patch panel.



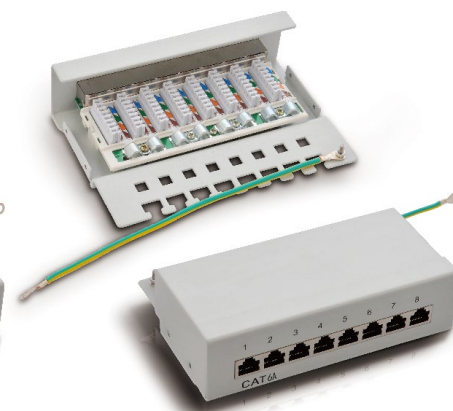
P198-8-C6

Cat6 shielded 8 ports patch panel.



P198-8-C6A

Cat6A shielded 8 ports patch panel.



P198-12-C5

Shielded 12 ports patch panel.



P198-12-C6

Shielded 12 ports patch panel.



P198-12R-C5

Cat5e shielded 12 ports patch panel(with boot).



P198-12R-C6

cat6 shielded 12 ports patch panel(with boot).



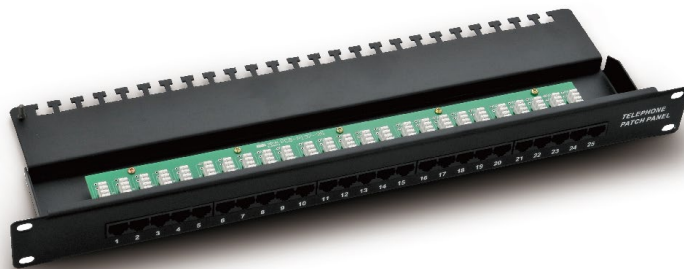
Patch Panels

P197-25

Voice patch panel.

Parameter

- 25 Ports Voice Patch Panel(8P4C).
- Have connector & cable management, convenient for using High-quality guaranteed.
- Fit for wires AWG22-26.
- Plug omsertopm life 200 cycles.
- Plug insertion life 750 cycles Min.
- Dielectric strength:When applied AC 750V or DC 1000V 1 minute between adjacent terminal NO change.
- Material:Using PC/ABS for cover,PC for module, phosphor bronze for IDC wire post.

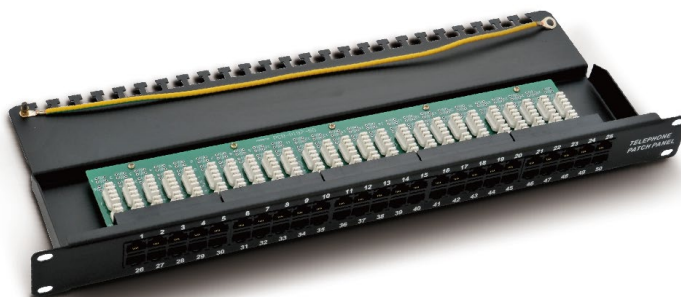


P197-50

Voice patch panel.

Parameter

- 50 Ports Voice Patch Panel(8P4C).
- Have connector & cable management, convenient for using High-quality guaranteed.
- Fit for wires AWG22-26.
- Plug omsertopm life 200 cycles.
- Plug insertion life 750 cycles Min.
- Dielectric strength:When applied AC 750V or DC 1000V 1 minute between adjacent terminal NO change.
- Material:Using PC/ABS for cover,PC for module, phosphor bronze for IDC wire post.



P197-25-1

Voice patch panel.

Parameter

- 25 Ports Voice Patch Panel(8P4C).
- Fit for wires AWG22-26.
- Plug omsertopm life 200 cycles.
- Plug insertion life 750 cycles Min.
- Dielectric strength:When applied AC 750V or DC 1000V 1 minute between adjacent terminal NO change.
- Material:Using PC/ABS for cover,PC for module, phosphor bronze for IDC wire post.



Patch Panels

P197-50-1

Voice patch panel.

Parameter

- 50 Ports Voice Patch Panel(8P4C).
- Fit for wires AWG22-26.
- Plug omsertopm life 200 cycles.
- Plug insertion life 750 cycles Min.
- Dielectric strength:When applied AC 750V or DC 1000V 1 minute between adjacent terminal NO change.
- Material:Using PC/ABS for cover,PC for module, phosphor bronze for IDC wire post.



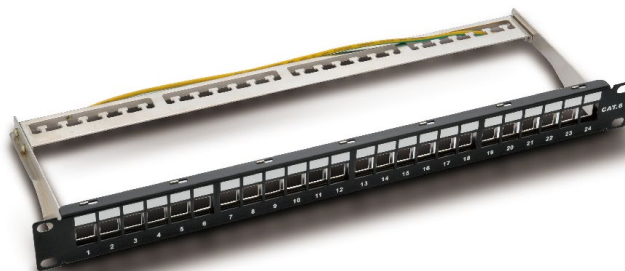
P196-24

24 ports blank patch panel.



P200-24B

24 ports shielded blank patch panel.



P194-1U

1U blank panel.



P194-2U

2U blank panel.



Patch Panels

J606

1u cable manager 5 rings.



J606B

2u cable manager 5 rings.



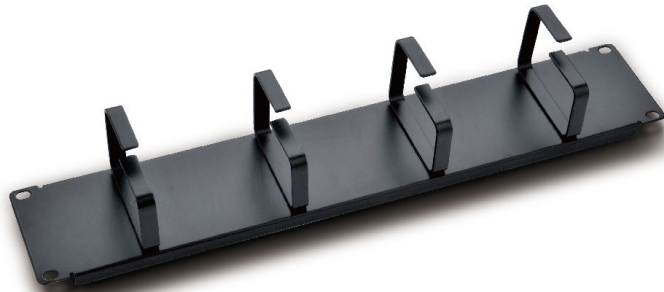
J606-1

1u cable manager 5 rings.



J606-1B

2u cable manager 4 rings.



J606-2

Cable manager (Metal Cover).



Patch Panels

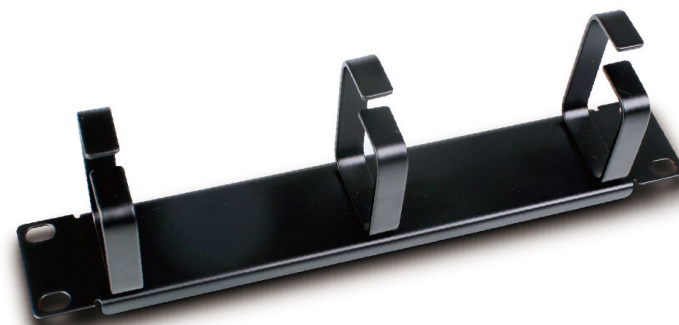
J606-3

Cable manager (plastic)5 rings.



J606-7

Cable manager 3 rings(10").



J606B-4

Brush panel.



J606-5V2H

Cable manager (Metal)7 rings.



J606-6

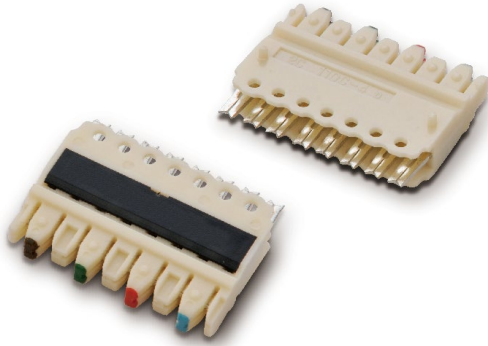
1u cable manager (plastic).



Patch Panels

T346-4

110 Type connecting blocks.

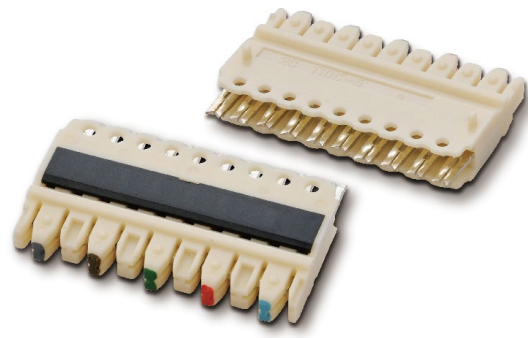


Parameter

- Meet ISO/IEC 11801 and TIA/EIA568C.
- Suitable for Cat.5e and Lan cable.
- Connect at least 500 times.
- 4 pairs connecting block.

T346-5

110 Type connecting blocks.



Parameter

- Meet ISO/IEC 11801 and TIA/EIA568C.
- Suitable for Cat.5e and Lan cable.
- Connect at least 500 times.
- 5 pairs connecting block.

T347-50A

50 pairs termination kits.

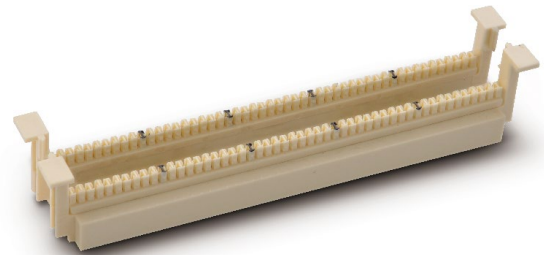


Parameter

- A type is with legs,B type is without legs.
- A type installing at the narrow work area.
- With legs(A).

T347-50B

50 pairs termination kits.



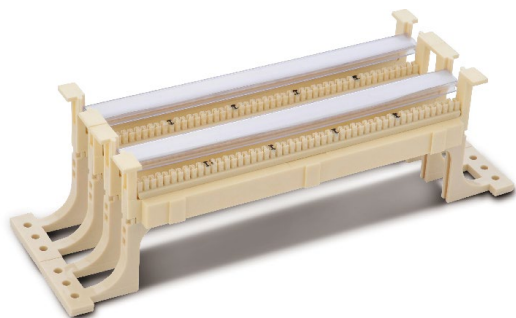
Parameter

- B type installing on standardized 19"racks or cabinets.
- Without leg(B).

Patch Panels

T347-100A

100 pairs termination kits, With legs(A).



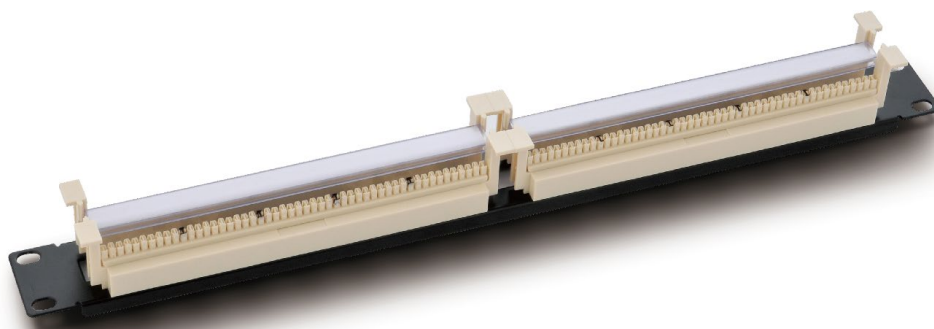
T347-100B

100 pairs termination kits, Without leg(B).



T348-100

rack type 100 pairs termination kits.



MODULAR PLUG

S901A

Cat.5e Modular Plug 8P8C
3U-50U Unshielded.



S901B

Cat.5e Modular Plug 8P8C
3U-50U Shielded.



S901C

Telephone plug 6P4C
3U Unshielded.



S901D

Cat.6 Modular Plug 8P8C
3U-50U Unshielded.



S901E

Cat.6 Modular Plug 8P8C
3U-50U shielded.



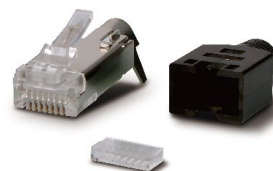
S901F

Cat.6A Modular Plug 8P8C
3U-50U unshielded.



S901G

Modular Plug 8P8C
3U-50U shielded.



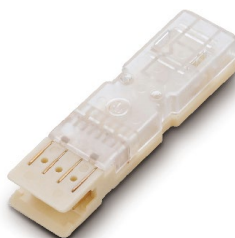
S903-1

110 Patch Plug.



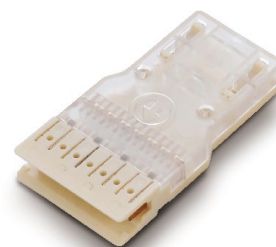
S903-2

110 Patch Plug.



S903-4

110 Patch Plug.



S902A/B/C

Order Information:

Item No.	Description
S902A	Cat.5e
S902B	Cat.6
S902C	Cat.6A

■ Colors available: Grey, Black, Blue, Red, Yellow, Green, Orange, Purple.



NETWORK TOOL

G110

IDC impact tool.



G225

Stripper.



G312

Coaxial cable stripper .



G314

IDC impact tool.



G324

Impact tool.



G501

Coaxial cable stripper.



G601

Plastic 100 tool w/stripper.



G602

Impact tool.



G603

Impact tool with 5 pairs.

