

Structure Cabling

Patch Cord

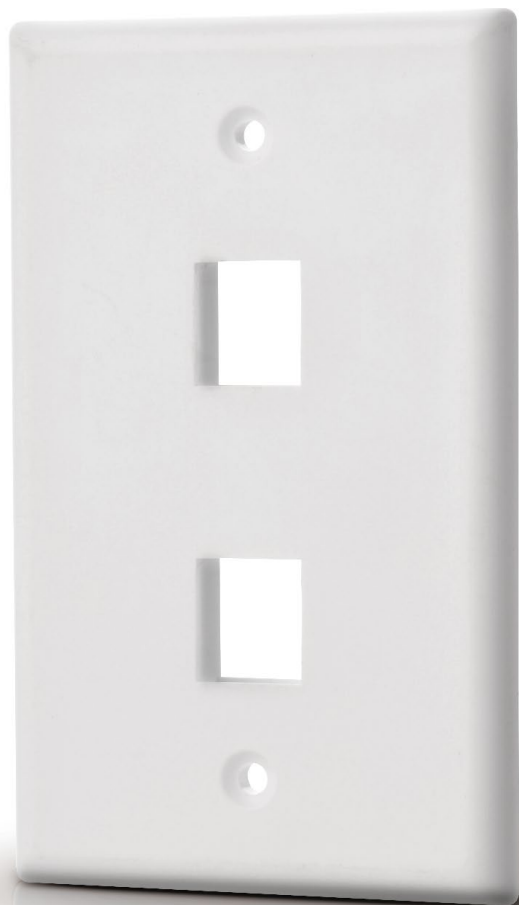
Patch Panel

Jacks & Plugs

» **Keystone Faceplate & Surface Box**

Optic Series

AMERICAN FACE PLATE



A175-1/2/3/4 /6A

Flush Plate

- Jack flush plate.
- 1/2/3/4/6 ports available.
- Various color available.
- Dimensions:114*70*9.5mm.
- Assembly:19.5mm.
- Description:Flush plate.



A175
flush plate



A175-1A
flush plate



A175-2A
flush plate



A175-3A
flush plate



A175-4A
flush plate



A175-6A
flush plate

AMERICAN FACE PLATE



A175-1/2/3/4 /6B

Flush Plate

- Jack flush plate.
- 1/2/3/4/6 ports available.
- Various color available.
- Dimensions:114*70*9.5mm.
- Increase logo design on port,easy to use & convenient to install.
- Assembly:19.5mm.
- Description:Flush plate.



A175-1B
flush plate



A175-2B
flush plate



A175-3B
flush plate



A175-4B
flush plate



A175-6B
flush plate

AMERICAN FACE PLATE

OP00465/OP00476

Face plate Op White/Ivory Single RJ-14 With Wiring



- Smoothfaceplate.
- Integral jack and screw-type terminal block.
- Mounts on mounting bracket or standard.
- Electrical outlet box.

Order Information:

PART Number	Color
OP00465	WHITE
OP00476	IVORY

OP00466/OP00477

Face plate Op White/Ivory dual RJ-14 With Wiring



- Smoothfaceplate.
- Integral jack and screw-type terminal block.
- Mounts on mounting bracket or standard.
- Electrical outlet box.

Order Information:

PART Number	Color
OP00466	WHITE
OP00477	IVORY

OP00467/OP00478

Face plate Op White/Ivory Single F-81 Connector



- F connector module, perfect for use CATV applications.
- Includes mounting screws.

Order Information:

PART Number	Color
OP00467	WHITE
OP00478	IVORY

OP00468/OP00479

Face plate Op White/Ivory Dual F-81 Connector



- F connector module, perfect for use CATV applications.
- Includes mounting screws.

Order Information:

PART Number	Color
OP00468	WHITE
OP00479	IVORY

AMERICAN FACE PLATE

OP00469/OP00480

Face plate Op White/ Ivory RJ-14 And F-81 Connector



- Provide quick at-the-wall connections for RJ11 telephone and F connection video applications;
- High quality plastic for superior resistance to impacts, chemicals and solvents; midsize wallplates hide irregular cuts or flaws around outlets

Order Information:

PART Number	Color
OP00469	WHITE
OP00480	IVORY

A175-V+2F

Face plate Op White/ Ivory RJ-14 And F-81 Connector



- Provide quick at-the-wall connections for RJ11 telephone and F connection video applications;
- High quality plastic for superior resistance to impacts, chemicals and solvents; midsize wallplates hide irregular cuts or flaws around outlets

Order Information:

PART Number	Color
A175-V+2F-WH	WHITE
A175-V+2F-IV	IVORY

OP00473/OP00484

Face plate Op White/ Ivory RJ-14 Hanging Style With Wiring



- Wall phone jacks available in 4-or-6-conductor models.
- Screw terminal or quick-connect termination options.

Order Information:

PART Number	Color
OP00473	WHITE
OP00484	IVORY

TP-HDMI+F

Face plate one HDMI and F-81 connector



Order Information:

PART Number	Color
TP-HDMI+F-WH	WHITE
TP-HDMI+F-IV	IVORY

AMERICAN FACE PLATE

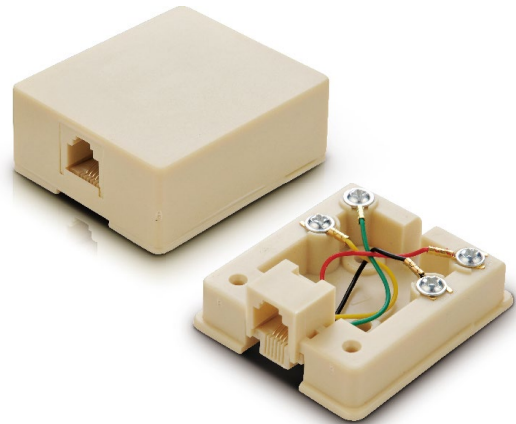
OP00474/OP00485

Face plate Op White/ Ivory Single RJ-14 Surface Mount

- Screw terminal base with snap-on cover.
- Includes mounting screws and double-sided tape.

Order Information:

PART Number	Color
OP00474	WHITE
OP00485	IVORY



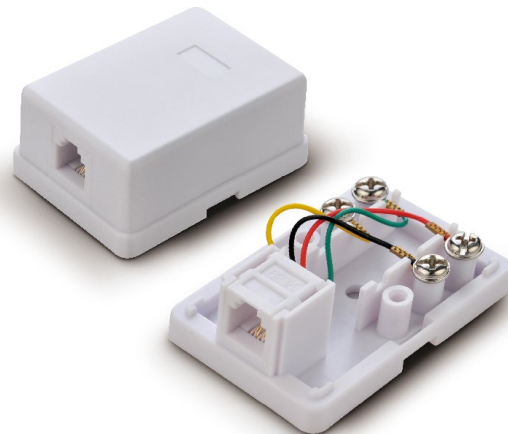
OP00474B/OP00485B

Face plate Op White/ Ivory Single RJ-14 Surface Mount

- Screw terminal base with snap-on cover.
- Includes mounting screws and double-sided tape.

Order Information:

PART Number	Color
OP00474B	WHITE
OP00485B	IVORY



OP00475/OP00486

Face plate Op White/ Ivory Dual RJ-14 Surface Mount

- Screw terminal base with snap-on cover.
- Includes mounting screws and double-sided tape.

Order Information:

PART Number	Color
OP00475	WHITE
OP00486	IVORY



AMERICAN FACE PLATE

00487

Face plate White/Ivory Single Gang



- This series offers the traditional electrical look often requested by the residential market.
- Suited for home office environment.
- Ideal for multiple applications.
- SIZE:75*124*6 mm.

Order Information:

PART Number	Color
00487-WH	WHITE
00487-IV	IVORY

00488

Face plate White/Ivory Two Gang



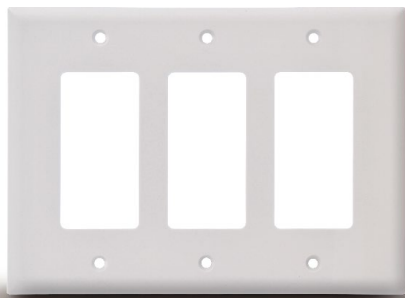
- This series offers the traditional electrical look often requested by the residential market.
- Suited for home office environment .
- Ideal for multiple applications.
- SIZE:125.5*124*6 mm.

Order Information:

PART Number	Color
00488-WH	WHITE
00488-IV	IVORY

00489

Face plate White/ Ivory Three Gang



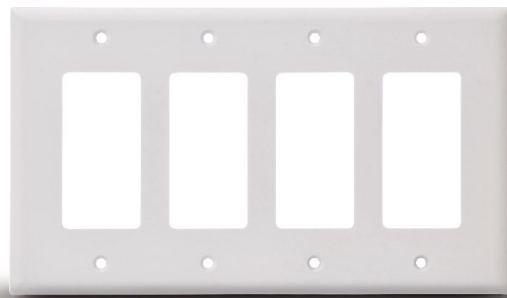
- This series offers the traditional electrical look often requested by the residential market.
- Suited for home office environment.
- Ideal for multiple applicationse.
- SIZE:172*124*6 mm.

Order Information:

PART Number	Color
00489-WH	WHITE
00489-IV	IVORY

00490

Face plate White/ Ivory Four Gang



- This series offers the traditional electrical look often requested by the residential market.
- Suited for home office environment.
- Ideal for multiple applicationse.
- SIZE:217*124*6 mm.

Order Information:

PART Number	Color
00490-WH	WHITE
00490-IV	IVORY

AMERICAN FACE PLATE

00491

Face plate insert white/ ivory single hole



- Combine voice, and A/V connectors in popular wallplate.

Order Information:

PART Number	Color
00491-WH	WHITE
00491-IV	IVORY

00492

Face plate Insert White/ Ivory Two Hole Vertical



- Combine voice, and A/V connectors in popular wallplate.

Order Information:

PART Number	Color
00492-WH	WHITE
00492-IV	IVORY

00493

Face plate Insert White/ Ivory Two Hole Horizontal



- Combine voice, and A/V connectors in popular wallplate.

Order Information:

PART Number	Color
00493-WH	WHITE
00493-IV	IVORY

00494

Face plate Insert White/ Ivory Four Hole



- Combine voice, and A/V connectors in popular wallplate.

Order Information:

PART Number	Color
00494-WH	WHITE
00494-IV	IVORY

00495

Face plate Insert White/ Ivory Six Hole



- Combine voice, and A/V connectors in popular wallplate.

Order Information:

PART Number	Color
00495-WH	WHITE
00495-IV	IVORY

00496

Face plate Insert White/ Ivory Eight Hole



- Combine voice, and A/V connectors in popular wallplate.

Order Information:

PART Number	Color
00496-WH	WHITE
00496-IV	IVORY

AMERICAN FACE PLATE

00497

Face plate Insert White/ Ivory Single RJ-45



- Combine voice, data, and A/V connectors in popular wallplate.

Order Information:

PART Number	Color
00497-WH	WHITE
00497-IV	IVORY

00498

Face plate Insert White/ Ivory Dual RJ-45



- Combine voice, data, and A/V connectors in popular wallplate.

Order Information:

PART Number	Color
00498-WH	WHITE
00498-IV	IVORY

01423

Face plate Insert White/ Ivory four RJ-45



- Combine voice, data, and A/V connectors in popular wallplate.

Order Information:

PART Number	Color
01423-WH	WHITE
01423-IV	IVORY

TP00499 /00517

Face plate Insert White/ Ivory Single RJ-11/RJ-14 Insert



- Combine voice connectors in popular wallplate.

Order Information:

PART Number	Color
TP00499	WHITE
TP00517	IVORY

TP00500 /00518

Face plate Insert White/ Ivory Dual RJ-11/RJ-14 Insert



- Combine voice, and A/V connectors in popular wallplate.

Order Information:

PART Number	Color
TP00500	WHITE
TP00518	IVORY

TPIN-V+F

Face plate insert RJ11 and F -81 connector



- Provide quick at-the-wall connections for RJ11 telephone and F connection video applications.

Order Information:

PART Number	Color
TPIN-V+F-WH	WHITE
TPIN-V+F-IV	IVORY

00503

Face plate Blank Insert White / Ivory



- Blank, Combine in popular wallplate.

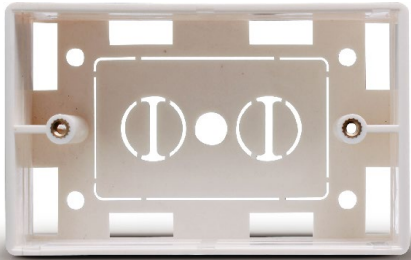
Order Information:

PART Number	Color
00503-WH	WHITE
00503-IV	IVORY

AMERICAN FACE PLATE

A164-B

Back box



- Size: 115*72*35 (mm)
- Material: ABS.
- Color: White, ivory.

Order Information:

Ltem	Description	Size
A164-B	BackBox	115*72*35mm

A175C

Face plate



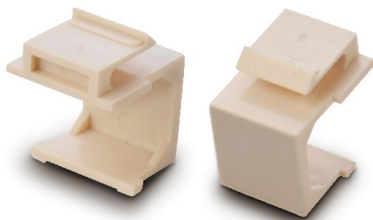
- Size: 115*72*35(mm)
- Material: ABS.
- Color: White, ivory.
- SIZE: 116.5*115*6 mm.

Order Information:

PART Number	Color
A175C-WH	WHITE
A175C-IV	IVORY

00504

Face plate Blank RJ45 Insert
White/ Ivory



- Faceplate blank RJ45 insert.

Order Information:

PART Number	Color
00504-WH	WHITE
00504-IV	IVORY

01432

Face plate RJ45 insert white/Ivory
with hole



- Faceplate RJ45 insert with hole.

Order Information:

PART Number	Color
01432-WH	WHITE
01432-IV	IVORY

XHDAC01424/01426

HDMI connector



Order Information:

PART Number	Color
XHDAC01424	WHITE
XHDAC01426	IVORY

AMERICAN FACE PLATE

KS-01

Face plate RJ45 insert st connector



KS-02

Face plate RJ45 insert f-81 connector(nickel plating)



KS-03

Face plate RJ45 insert f-81 connector(gold plating)



KS-04

Face plate insert with RCA connector



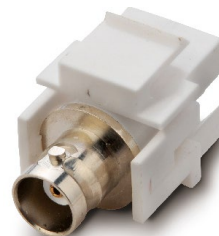
KS-05

Face plate RJ45 insert binding connector



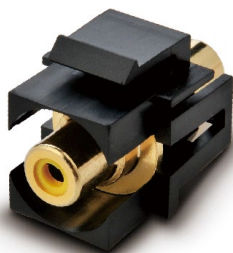
KS-06

Face plate RJ45 insert BNC connector



KS-07

Face plate RJ45 insert RCA connector



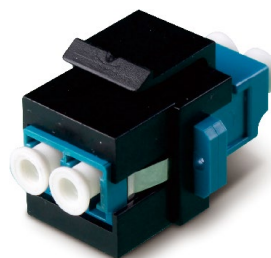
KS-08

Face plate RJ45 insert SC connector



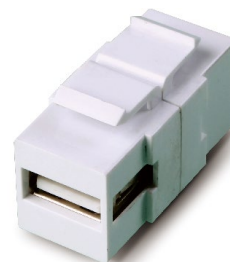
KS-09

Face plate RJ45 insert LC connector



KS-10

Face plate RJ45 insert USB connector



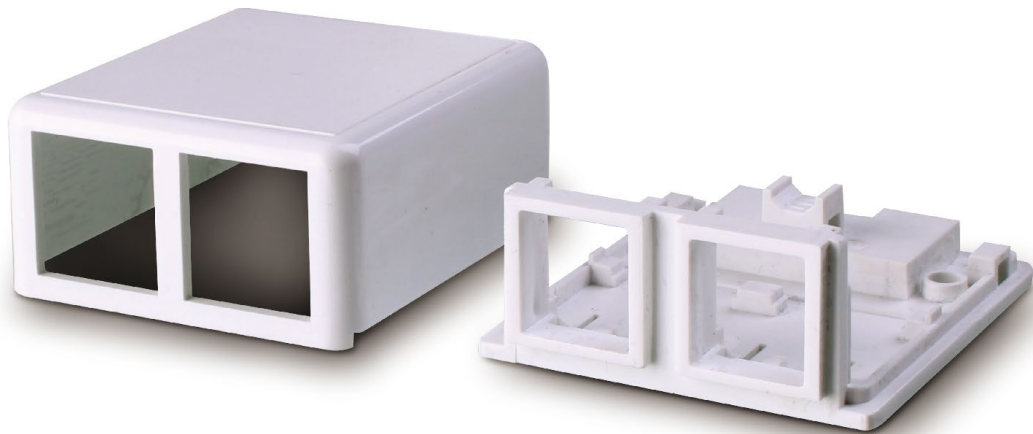
SURFACE MOUNT BOX



A166-2A

Surface mount box (double)

- Feature:fit for UTP keystone jack.
- Material:PC/ABS.
- Color:white.
- Description:two port surface mount box.



A166-1A

Surface mount box (single)



- Feature:fit for UTP keystone jack..
- Material:PC/ABS.
- Color:white.
- Description:single port surface mount box.

A166-4A

Surface mount box(four port)



- Feature:fit for UTP keystone jack..
- Material:PC/ABS.
- Color:white.
- Description:four port surface mount box.

A166-6A

Surface mount box(six port)



- Feature:fit for UTP keystone jack.
- Material:PC/ABS.
- Color:white.
- Description:six port surface mount box.

SURFACE MOUNT BOX

A166-1

Surface mount box (single)



- Feature: fit for UTP jack.
- Material: PC/ABS.
- Color: white.
- Description: single port surface mount box (Dust cover).

A166-2

Surface mount box (double)



- Feature: fit for UTP jack.
- Material: PC/ABS.
- Color: white.
- Description: two port surface mount box (Dust cover).

A166-1B

Surface mount box (single)



- Feature: fit for all RJ45 keystone jack.
- Fit for UTP Jack.
- Material: PC/ABS.
- Color: white.
- Description: Single port surface mount box.

A166-2B

Surface mount box (double)



- Feature: fit for all RJ45 keystone jack.
- Fit for UTP Jack.
- Material: PC/ABS.
- Color: white.
- Description: two port surface mount box.

SURFACE MOUNT BOX

A167A/B

UTP RJ45 BOX

- Feature:RJ45 Cat 5e/6 Module.
- Description:Box(Single-port).

Order Information:

PART Number	Description
A167A	Cat 5e
A167B	Cat 6



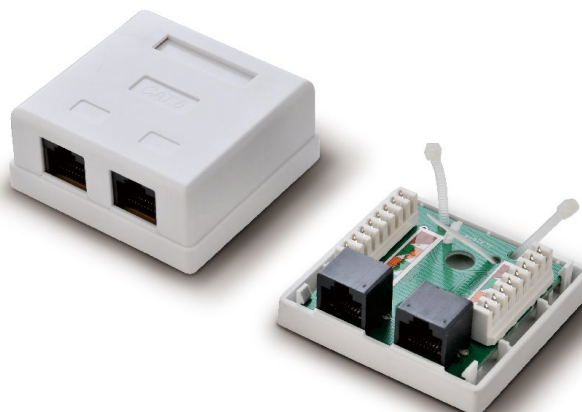
A168A/B

UTP RJ45 BOX

- Feature:RJ45 Cat 5e/6 Module.
- Description:Box(Double-port).

Order Information:

PART Number	Description
A168A	Cat 5e
A168B	Cat 6



A169A/B

FTP RJ45 BOX

- Feature:RJ45 Cat 5e/6 Module.
- Description:Box FTP(Single-port).

Order Information:

PART Number	Description
A169A	Cat 5e
A169B	Cat 6



SURFACE MOUNT BOX

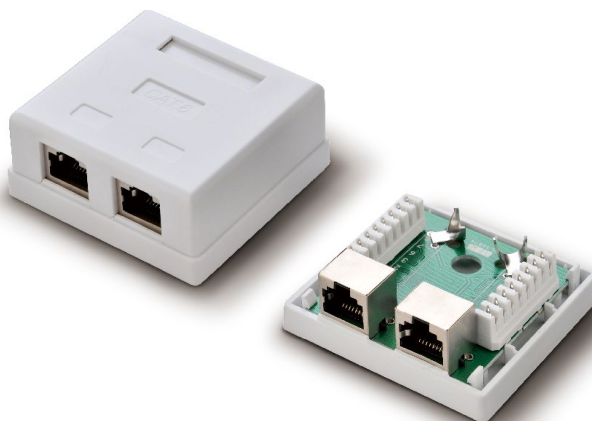
A170A/B

FTP RJ45 BOX

- Feature:RJ45 Cat 5e/6 Module.
- Description:Box FTP(Double-port).

Order Information:

PART Number	Description
A170A	Cat 5e
A170B	Cat 6



A181A

Surface BOX

- Description:UTP CAT5E RJ45+RJ11.

Order Information:

PART Number	Description
A181A	Cat 5e

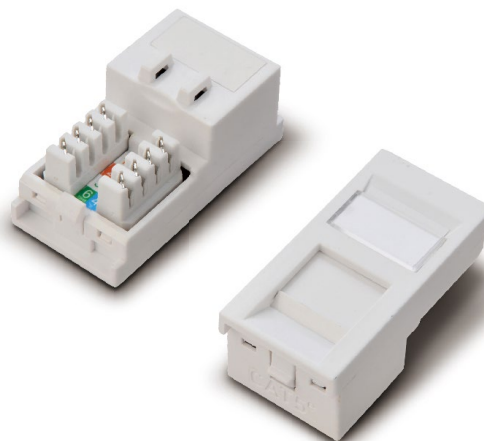


UK FACE PLATE

SH 001A/B

RJ 45 Cat 5e/6 Standard Eurostyle Modules

- Overall dimensions 50 x 25mm. Module comply with the ISO and EIA TIA Standard. Each shuttered module is supplied with a slide label field and space above, this is allowed for use of self adhesive or further labelling if required. Termination can be made using Krone tooling, a cable tie base is positioned to the side of the IDC blocks to relieve cable stress.



Order Information:

PART Number	Description
SH001A	Cat 5e
SH001B	Cat 6

SH 002A/B

RJ 45 Cat 5e/6 Standard LJ6(6C) Modules

- Overall dimensions 39 x 25mm. Module comply with the ISO and EIA TIA Standard. 6c modules are ideal for floor box installations. The compact two piece design allows for a fast and easy in stallation and results in a low profile finish.



Order Information:

PART Number	Description
SH002A	Cat 5e
SH002B	Cat 6

SH 003A/B

RJ 45 Cat 5e/6 Standard Modules

- Overall dimensions 50 x 25mm. Module comply with the ISO and EIA TIA Standard. Each shuttered module is supplied with a slide label field and space above, this is allowed for use of self adhesive or further labelling if required. Termination can be made using Krone tooling, a cable tie base is positioned between the IDC blocks to relieve cable stress.



Order Information:

PART Number	Description
SH002A	Cat 5e
SH002B	Cat 6

UK FACE PLATE

SH 019

Face plates



- 1 Port faceplate.
- Fit for assembly 50X25mm modules.

SH 007

Standard Face plates



- 1 gang standard faceplate.
- Supplied c/w fixing screws in "easy tear" poly bags and available as 1 gang (accepts up to 2 Euro Style modules)
- Fit for assembly 50X25mm modules .

SH 008

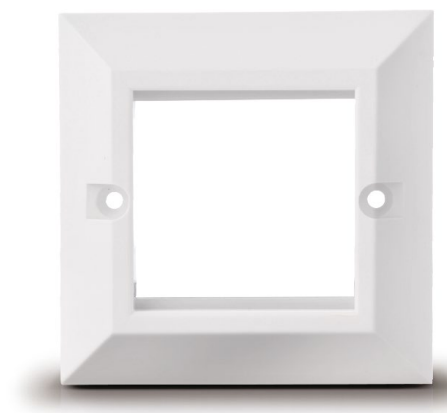
Standard Face plates



- 2 gang standard faceplate.
- Supplied c/w fixing screws in "easy tear" poly bags and available as 2 gang (accepts up to 4 Euro Style modules).
- Fit for assembly 50X25mm modules .

SH 009

Bevelled Face plates



- 1 gang bevelled faceplate.
- Supplied c/w fixing screws in "easy tear" poly bags and available as 1 gang (accepts up to 2 Euro Style modules) .
- Fit for assembly 50X25mm modules.

UK FACE PLATE

SH 010

Bevelled Face plates

- 2 gang bevelled faceplate.
- Supplied c/w fixing screws in "easy tear" poly bags and available as 2 gang (accepts up to 4 Euro Style modules).
- Fit for assembly 50X25MM/50X16.6MM modules.



SH 018

Face plates



- 1 Port faceplate.
- Fit for assembly 39X25MM LJ6 modules.

SH 020

Face plate panel

- Matching the standard British faceplate matching keystone.
- SIZE:25*50 mm.



SH 021

Face plate panel

- Matching LJ6C faceplate(SH018 SH036)matching keystone.



SH 036

Face plates



- 2 Port faceplate.
- Fit for assembly 39X25MM LJ6 modules.

SH 016

Blanks

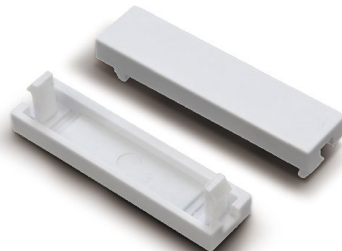
- 25X50mm BLANK.



SH 017

Blanks

- 12.5X50MM BLANK.



UK FACE PLATE

SH 011

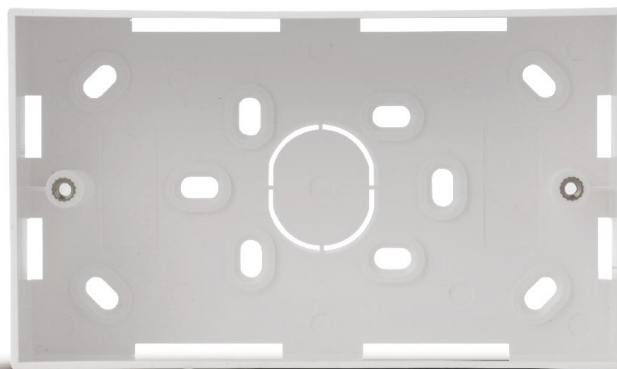
Back box



- 1 gang back box 32mm depth.
- Available in "easy tear" poly bags in 1 gangs-the boxes are also available in standard(32mm) versions.

SH 012

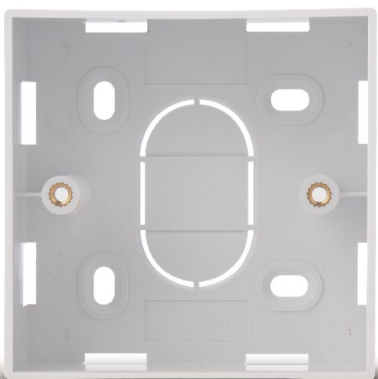
Back box



- 2 gang back box 32mm depth.
- Available in "easy tear" poly bags in 2 gangs-the boxes are also available in standard(32mm) versions.

SH 013

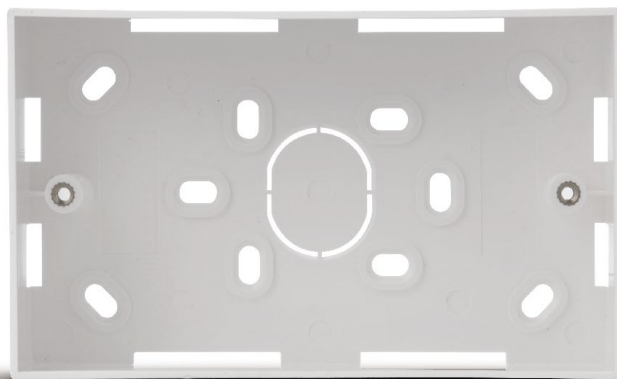
Back box



- 1 gang back box 42mm depth.
- Available in "easy tear" poly bags in 1 gangs-the boxes are also available in standard(42mm) versions.

SH 014

Back box



- 2 gang back box 42mm depth.
- Available in "easy tear" poly bags in 2 gangs-the boxes are also available in standard(42mm) versions.

GERMAN FACE PLATE

DE-01

1 port Wall plate



- 1 port Wallplate for Keystone Modules, German type.
- Plate 50*50mm,Frame 80*80mm.
- A , for connection of keystone Jacks.
- B,Connection way of the module are 45°vertical.
- C,Inclusive module shutter device,avoid dust.
- D,Name plate desing for identification.
- E, Shining structured surface parts.
- F,Full shielded metal housing,usable as central grounding position.
- G,color: white.

DE-02

2 port Wall plate



- 1 port Wallplate for Keystone Modules, German type.
- Plate 50*50mm,Frame 80*80mm.
- A , for connection of keystone Jacks.
- B,Connection way of the module are 45°vertical.
- C,Inclusive module shutter device,avoid dust.
- D,Name plate desing for identification.
- E, Shining structured surface parts.
- F,Full shielded metal housing,usable as central grounding position.
- G,color: white.

DE-03

Germany back box



- Surface Mountbox.
- 80x80mm for keystone Wall Outlet.
- Surface Mount frame for additional keystone Jack Wall Outlet.